



www.masmedical.net

With 'CARA THREAD SERIES'
we offer you the possibility
to make your wish come true
in a natural and safe way.

MEDIATHE Co., Ltd
Phone : +82 70 4837 3524 / Fax: : +82 31 278 2979 / Email : mediathe@masmedical.net



With 'CARA THREAD SERIES's we offer you the possibility
to make your wish come true in a natural and safe way.



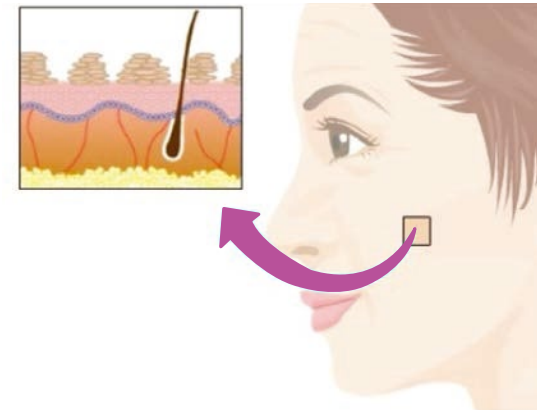


Contents

01	CARA THREAD Principle	4
02	CARA THREAD Mono & Multi type	5 - 6
03	CARA THREAD Screw & Multi screw type	7 - 8
04	CARA THREAD Gold type	9 - 10
05	CARA THREAD Duplex type	11 - 12
06	CARA THREAD Cog type	13 - 14
07	CARA THREAD Certification	15
08	CARA THREAD Formation	16

Have you ever wished to take your V Line and S Line back in time and smooth away the signs of aging?

With 'CARA THREAD SERIES' we offer you the possibility to make your wish come true in a natural and safe way.



- ☑ CARA Thread
- ☑ CARA Screw Thread
- ☑ CARA Multi Thread
- ☑ CARA Multi Screw Thread
- ☑ CARA Gold Thread
- ☑ CARA Duplex Thread
- ☑ CARA Cog Thread

NEW TECHNOLOGY NON-SURGICAL FACE AND BODY LIFT

Present a new revolutionary method of strand facelift and body. The technology is based on the use of innovative monofilament and polyfilament microthreads of polydioxanone (PDO).

This is a colorless crystalline synthetic biodegradable polymer, which has for many years been used as a suture material in cardiology. The threads are introduced as very subtle and almost imperceptible acupuncture needles to a depth mesh dermis. Patients safely tolerate manipulation even without anesthesia. The threads are very strong and after 60 – 80 days save up to 50% of the strength properties. After 180 -240 days they are completely absorbed. Tissue reaction to thread PDO is insignificant and is soft new collagen. High rate of biodegradation of threads – an important condition for ensuring a soft new collagen without compromising microcirculation and vascularisation of tissue in the area of installation (without the formation of dense fibrosis, as in the case of large-diameter fibers and threads with a long period of biodegradable fibers (over a year). Newly formed collagen continues to bear the "skeleton" function for 18-24 months. The procedure can be repeated as needed.

What is CARA Thread?

The inserted suture thread is made of PDO (Polydioxanone) material which is safe enough to have been used for cardiac surgery.

When Threads insert into the derma connecting with needle, the immune system regards the thread as the FB. So, the immune system makes the axenic inflammatory reaction.

According to this reaction, collagen formation and blood stream are induced. In the part of these causes, patient's skin is improved. Also, the tension of threads makes the lifting effect.

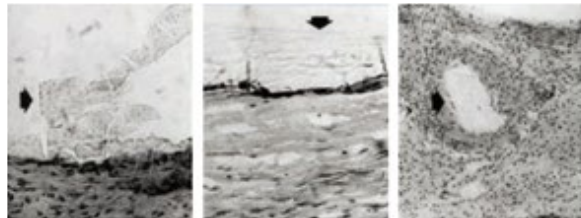
Principle of CARA Thread

The immune system recognizes inserted thread as the FB. So the immune system tries to remove it.

In this process, Inserted Thread induces the axenic inflammatory reaction into the derma.

Also patients skin is improved by collagen formation and blood flow which are made by this reaction.

Furthermore, Thread tension makes the lifting effect.



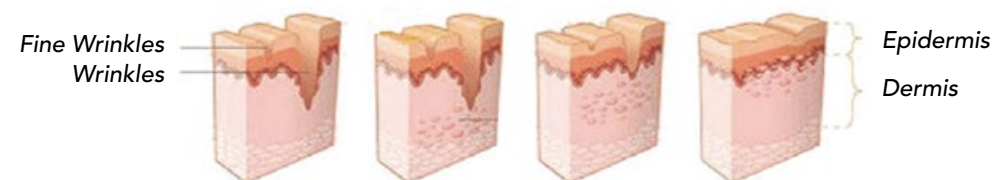
PDO SUTURE

Except for collagen, Capsule, bundle, the inserted threads will be completely absorbed in 6 month

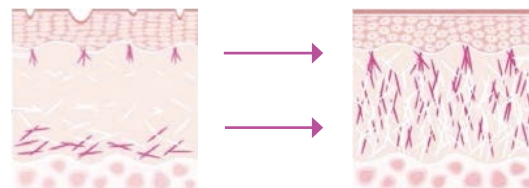
Advantages of CARA Thread

- Strong Lifting and Tightening
- Skin Firming
- Skin Rejuvenation and Whitening
- Wrinkle Removal
(e.g. Nasolabial Folds etc.)
- Skin Trouble Removal (e.g. Acne etc.)
- Scar Filling
- Multiple application with Filler or Botox
- High patient satisfaction because of its immediate effect

Principle of CARA Thread



The Skin tissues are stimulated from the CARA thread operation so that is regenerated and restructured densely.



CARA Mono Thread

Model	Gauge	Needle Length
M2638	26 G	38mm
M2650		50mm
M2660		60mm
M2690		90mm
M2938	29G	38mm
M2950		50mm
M3025	30G	25mm
M3038		38mm



CARA MULTI THREAD



CARA Multi Thread

Model	Gauge	Needle Length
T2538	25 G	38mm
T2550		50mm
T2638	26G	38mm
T2650		50mm
T2690		90mm



What is CARA Multi Thread

- New Lifting Technique which injects Multiple Threads for Strong Lifting Effect and for Enhancing Cell Engraftment to the treatment areas. The thread is made of PDO Material, which is safe enough to have been used for cardiac surgery.

It is Differentiated Advantages are,

- To build collagen, Skin elasticity, Skin enhancement
- Scaffold Effect for Filler/ Botox and PRP
- Strong Lifting Effect by Multiple Threads

CARA SCREW THREAD

CARA Screw Thread was based on CARA Mono Thread. For this model, mono thread winds around a needle, so thread is doing the same for stanchion intradermally.

In some cases, mono thread and screw thread are used in combination with various threads such as multi, gold, duplex, cog types.

CARA Screw Thread

MODEL	GAUG	NEEDLE LENGTH
H2660	26G	60mm
H2690		90mm
H2938	29G	38mm
H2950		50mm



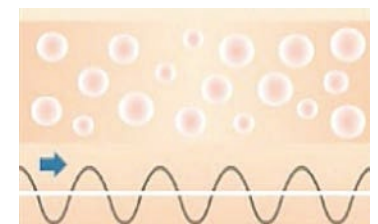
CARA MULTI SCREW THREAD

Brand new CARA Multi Screw Thread (twisted screw type) was based on CARA Multi Thread. For this model, twisted thread winds around a needle, so thread is doing the same for stanchion intradermally.



CARA Multi Screw Thread

MODEL	GAUGE	NEEDLE LENGTH
TH2538	25G	38mm
TH2550		50mm
TH2638	26G	38mm
TH2650		50mm
TH2690		90mm



PDO

CARA DUPLEX THREAD



CARA Duplex Thread

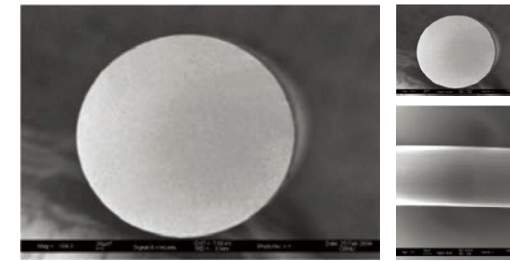
MODEL	GAUGE	NEEDLE LENGTH
D2638	26G	38mm
D2650		50mm

Principle of Duplex Thread

PGA+PDO THREAD (PGA – Polyglycolic Acid, PDO – Polydioxanone)

This is whole new concept of skin tightening and lifting technology injecting multiple threads for enhancing cell engraftment.

Main components of the thread are PGA and PDO materials which are safe enough to have been used for cardiac surgery for years.



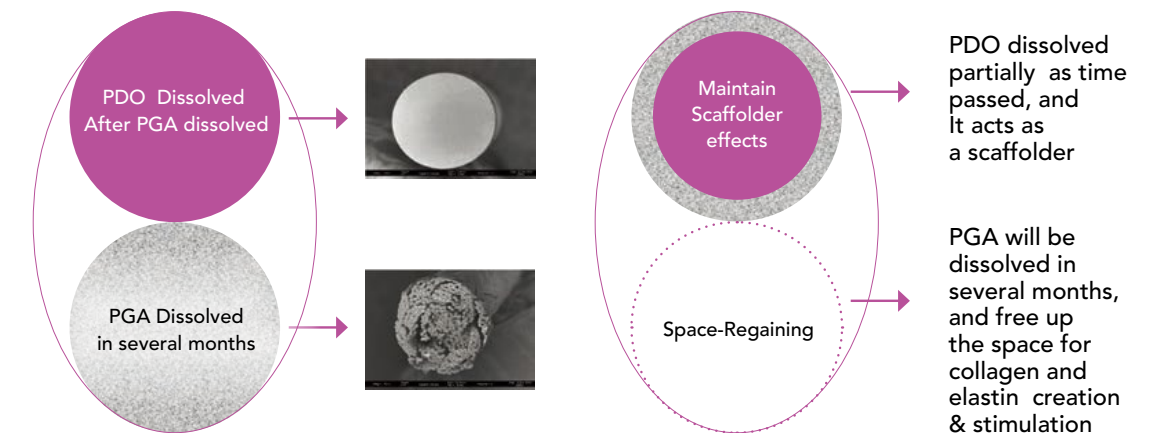
PDO(Monofilament)



PGA(Multifilament)

Skin organization is stimulated from the power thread operation so that is regenerated and restructured densely.

PGA/ PDO Thread shows fine effects of skin resurfacing, wrinkle improvement, Skin elasticity.



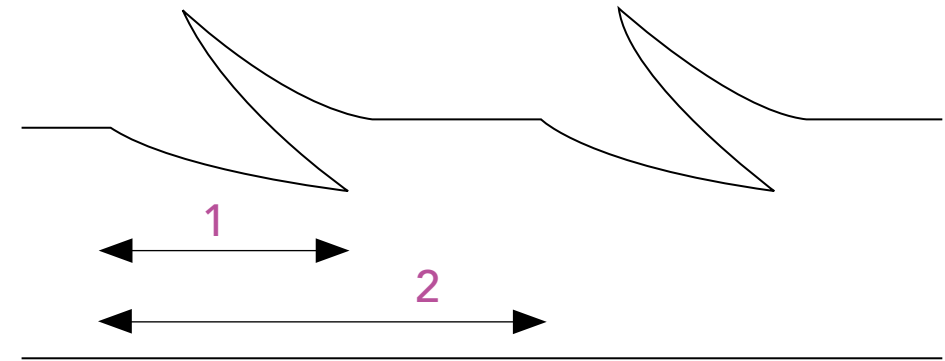
CARA COG THREAD



What is CARA COG Thread?

CARA Cog thread is absorbable monofilament surgical sutures which has cog (barbed thread). CARA Cog Thread is improved to stay longer in the tissue.

Cogs become a supporting structure for soft tissues when the sutures are inserted under the skin. Thus the thread is much more stable and has long lasting effect.



CARA Cog Thread

Model	Gauge	Needle Length	PDO Length		Shape
M19B1014	19G	100	140	1-0	
M21D2010	21G	90	100	2-0	
M23D3009	23G	60	90	3-0	
M23D3011		90	110		
M23E3009		60	90		
M23E3012		90	120		

Model	Gauge	Needle Length	Shape
C2338	23G	38mm	
C2360		60mm	
C2390		90mm	

Anchoring Strength / Tensile Property

Effective lifting and great clinical uses are since CARA cog thread has greater anchoring and tensile strength than the normal cut- thread offer and has effective facial and body lifting and does not get cut during the insertion procedure.

CERTIFICATION



GMP



ISO 13485



Certificate of Manufacturer



Laboratory Certificate



Patent on Thread

PRODUCT FORMATION



Mono / Screw / Multi / Multi Screw / Gold / Duplex Type

Component : PDO (Polydioxanone)
 Packing Unit : 100 pcs (20pcs in a pack)
 Storage : Room Temperature (1~30°C)

Cog Type

Component : PDO (Polydioxanone) Barbed type
 Packing Unit : 48 pcs (8pcs in a pack)
 Storage : Room Temperature (1~30°C)